

# MONDAY CLASSES

SEE LAST PAGE FOR PRICES



**MONDAY 4:30  
MS. AMANDA**



**MONDAY 5:30  
MS. AMANDA**

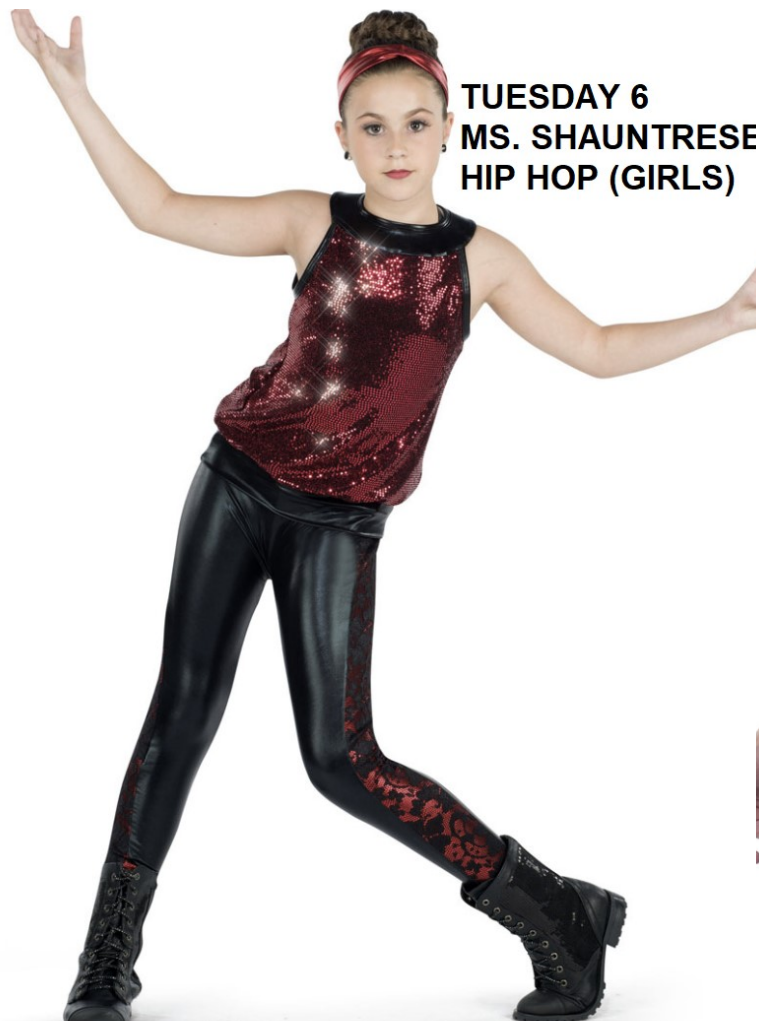


**MONDAY 7:30  
MS. AMANDA  
BALLET**

**\*SELECTIONS AND PRICES ARE SUBJECT TO CHANGE DUE TO AVAILABILITY**

# TUESDAY CLASSES

SEE LAST PAGE FOR PRICES



**TUESDAY 6  
MS. SHAUNTRESE  
HIP HOP (GIRLS)**



**TUESDAY 6  
MS. SHAUNTRESE  
HIP HOP (BOYS)**



**TUESDAY 7  
MS. SHAUNTRESE  
HIP HOP**

**\*SELECTIONS AND PRICES ARE SUBJECT TO CHANGE DUE TO AVAILABILITY**

# WEDNESDAY CLASSES

SEE LAST PAGE FOR PRICES



**WEDNESDAY 5:30**  
**MS. SHAUNTRESE**  
**JAZZ**

**\*SELECTIONS AND PRICES ARE SUBJECT TO CHANGE DUE TO AVAILABILITY**



# THURSDAY CLASSES

SEE LAST PAGE FOR PRICES



**THURSDAY 6  
MS. TENAY  
ACRO**



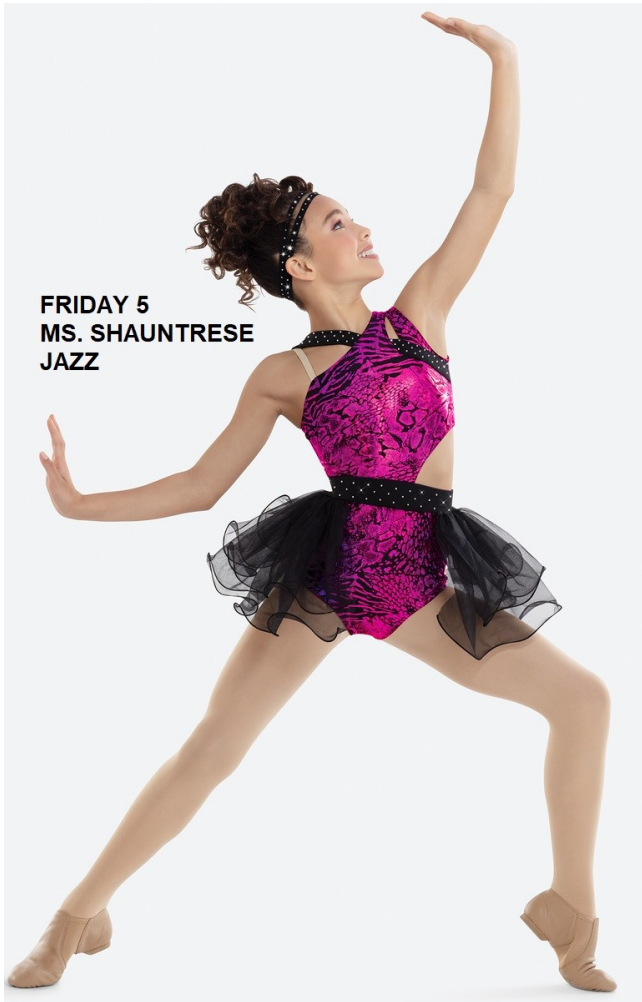
**THURSDAY 7  
MS. TENAY  
ACRO**

**\*SELECTIONS AND PRICES ARE SUBJECT TO CHANGE DUE TO AVAILABILITY**

# FRIDAY CLASSES

SEE LAST PAGE FOR PRICES

FRIDAY 5  
MS. SHAUNTRESE  
JAZZ



FRIDAY 6  
MS. SHAUNTRESE  
BALLET (2-IN-1)



FRIDAY 6  
MS. SHAUNTRESE  
TAP (2-IN-1)



\*SELECTIONS AND PRICES ARE SUBJECT TO CHANGE DUE TO AVAILABILITY

# SATURDAY CLASSES (PG 1)

SEE LAST PAGE FOR PRICES

**SATURDAY 9  
MS. LILY**



**SATURDAY 10  
MS. LILY**



**\*SELECTIONS AND PRICES ARE SUBJECT TO CHANGE DUE TO AVAILABILITY**



# SATURDAY CLASSES (PG 2)

SEE LAST PAGE FOR PRICES

SATURDAY 11  
MS. LILY  
BALLET (2-IN-1)



SATURDAY 11  
MS. LILY  
TAP (2-IN-1)



SATURDAY 12  
MS. LILY



\*SELECTIONS AND PRICES ARE SUBJECT TO CHANGE DUE TO AVAILABILITY

# COMPANY COSTUMES (PG. 1)

SEE LAST PAGE FOR PRICES

JUNIOR COMPANY  
LYRICAL



JUNIOR COMPANY  
JAZZ



RISING STARS  
COMPANY  
LYRICAL



RISING STARS COMPANY  
JAZZ



\*SELECTIONS AND PRICES ARE SUBJECT TO CHANGE DUE TO AVAILABILITY



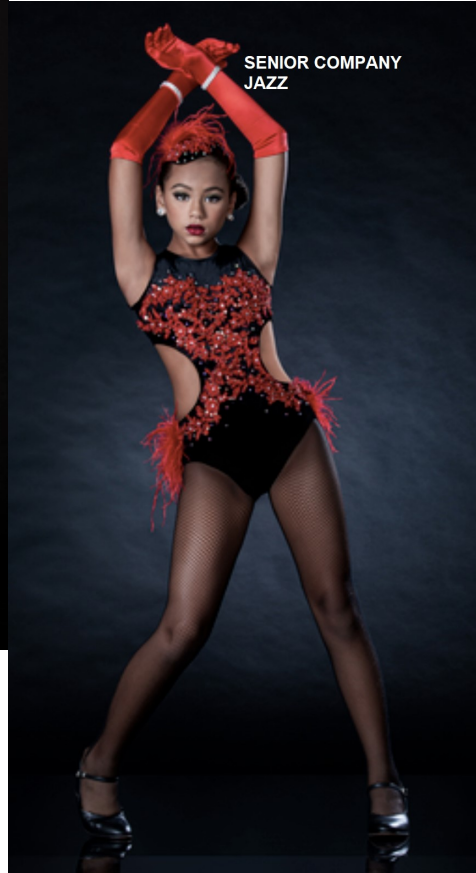
# COMPANY COSTUMES (PG. 2)

SEE LAST PAGE FOR PRICES

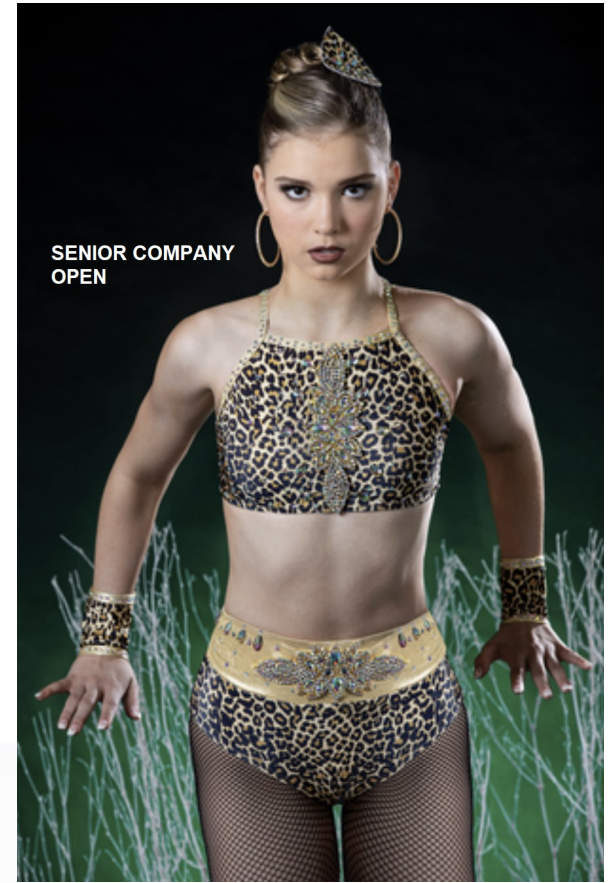
SENIOR COMPANY  
LYRICAL



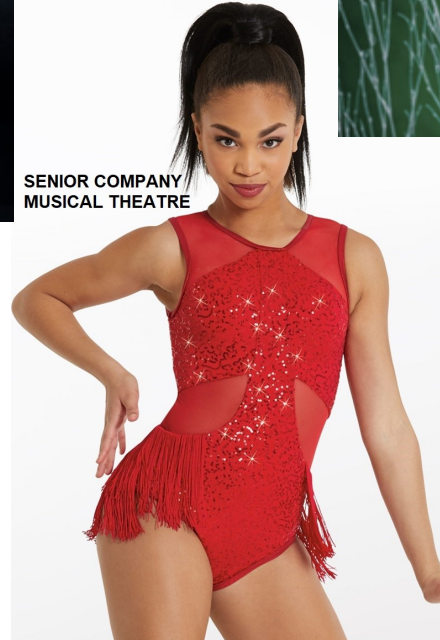
SENIOR COMPANY  
JAZZ



SENIOR COMPANY  
OPEN



SENIOR COMPANY  
MUSICAL THEATRE



\*SELECTIONS AND PRICES ARE SUBJECT TO CHANGE DUE TO AVAILABILITY

# SOLO COSTUMES

SEE LAST PAGE FOR PRICES

CLARA SOLO



ANGELINA SOLO



\*SELECTIONS AND PRICES ARE SUBJECT TO CHANGE DUE TO AVAILABILITY

# COSTUME PRICES (PG 1)

<b>MONDAY CLASSES</b>	<b>TUESDAY CLASSES</b>	<b>WEDNESDAY CLASSES</b>	<b>THURSDAY CLASSES</b>	<b>FRIDAY CLASSES</b>	<b>SATURDAY CLASSES</b>
4:30 PM MS. AMANDA COMBO <b>\$85</b>	6 PM MS. SHAUNTRESE HIP HOP <b>\$90 (GIRLS)</b> <b>\$45 (BOYS)</b>	4:30 PM MS. SHAUNTRESE RISING STARS COMPANY JAZZ <b>\$90</b>	6 PM MS. TENAY ACRO <b>\$92</b>	5 PM MS. SHAUNTRESE JAZZ <b>\$90</b>	9 AM MS. LILY COMBO <b>\$88</b>
5:30 PM MS. AMANDA JAZZ <b>\$89</b>	7 PM MS. SHAUNTRESE HIP HOP <b>\$90</b>	4:30 PM MS. SHAUNTRESE RISING STARS COMPANY LYRICAL <b>\$92</b>	7 PM MS. TENAY ACRO <b>\$95</b>	6 PM MS. SHAUNTRESE COMBO <b>\$115</b>	10 AM MS. LILY COMBO <b>\$88</b>
6:30 PM MS. AMANDA JUNIOR COMPANY JAZZ <b>\$95</b>		5:30 PM MS. SHAUNTRESE JAZZ <b>\$90</b>			11 AM MS. LILY COMBO <b>\$105</b>
6:30 PM MS. AMANDA JUNIOR COMPANY LYRICAL <b>\$95</b>		7:30 PM MS SHAUNTRESE SENIOR COMPANY JAZZ <b>\$170</b>			12 PM MS. LILY COMBO <b>\$92</b>
7:30 PM MS. AMANDA BALLET <b>\$92</b>		7:30 PM MS. SHAUNTRESE SENIOR COMPANY LYRICAL <b>\$ TBD</b>			
		7:30 PM MS. SHAUNTRESE SENIOR COMPANY MUSICAL THEATRE <b>\$90</b>	7:30 PM MS. SHAUNTRESE SENIOR COMPANY OPEN <b>\$140</b>		

**\*SELECTIONS AND PRICES ARE SUBJECT TO CHANGE DUE TO AVAILABILITY**



# COSTUME PRICES—SOLOS/DUOS (PG 2)

CLARA SOLO <b>\$100</b>	ANGELINA SOLO <b>\$95</b>
-------------------------	---------------------------

**\*SELECTIONS AND PRICES ARE SUBJECT TO CHANGE DUE TO AVAILABILITY**